

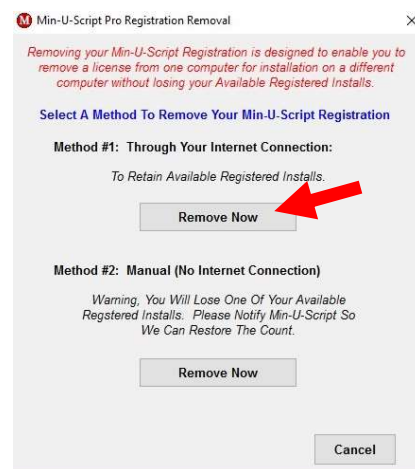
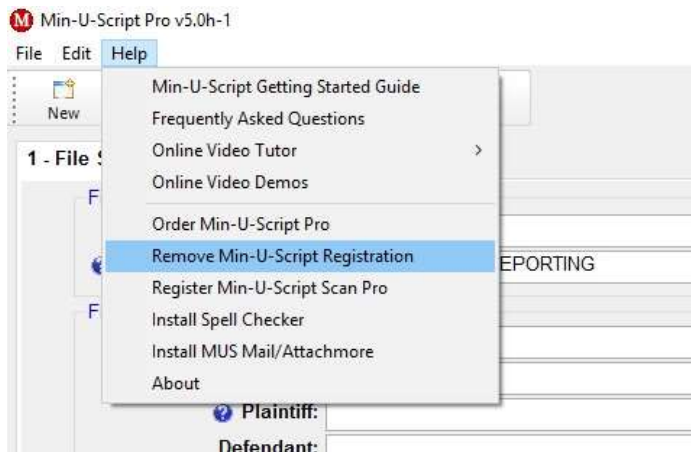
Included in this guide are instructions for:

- Transferring Min-U-Script Pro from one workstation to a new workstation.
- Adding a new workstation.
- Transferring Min-U-Script Pro Database from one server to a new server.

TRANSFERRING Min-U-Script Pro FROM ONE WORKSTATION TO A NEW WORKSTATION

Before transferring your Min-U-Script Pro software from one workstation to another, please request a download link to the Min-U-Script Pro v5.0 network version software by emailing support@minuscript.com. Do NOT use the download evaluation link from our website. That is only for standalone versions and may change important network connection information if installed over a network version. You will need the network download installation link for step 2.

1. Remove Product Registration from your current workstation: Before removing the registration from this PC select *About* from the *Help* menu, write down your Product Code or copy to your clipboard and then close this window. From the *Help* menu, select *Remove Min-U-Script Registration*. Click *Remove Now* when ready. Internet connection is required.



INSTALLING ON NEW WORKSTATION - Network version ONLY

1. Install Min-U-Script Pro v5.0 at the new workstation: Install the Min-U-Script Pro v5.0 for networks on the new PC. Follow the prompts to complete the installation. During the installation process you will be asked for the location of the database on the network drive. Navigate to your server and select the Min-U-Script Pro Shared folder.
2. Register Min-U-Script Pro v5.0: A new icon named Min-U-Script Pro 5.0 should now be available from your desktop. Start Min-U-Script Pro using this new icon. A dialog box asking you to register Min-U-Script Pro will open, click **Yes** and proceed to the next screen. Enter your product code at the Min-U-Script Registration window, and click *Register Now*.



3. Check your connection to the database on the server by opening the Library window and verifying that your job list is populated. If you see your Library then your installation is complete and you may start using Min-U-Script Pro. If your Library is empty, verify that you are connected to the server and can navigate to the Min-U-Script Pro Shared folder on the server through File Explorer. If you cannot see the Min-U-Script Pro Shared folder you may need to contact a member of your IT staff to reestablish your connection.

ADDING A NEW WORKSTATION

After purchasing a new workstation license you should have received an email confirmation with a network installation download link and product code. Download the software installation file and follow the directions above under the INSTALLING ON NEW WORKSTATION - Network version ONLY section of this User Guide.

TRANSFERRING Min-U-Script Pro Database FROM ONE SERVER TO A NEW SERVER

Depending on your current version of Min-U-Script Pro and your specific network setup, the process for moving the Min-U-Script Pro Shared folder may vary. If you are transferring to a new server due to a server crash, manual transfer of the Min-U-Script database will be required. Additionally, logo and signature image files may require special attention to ensure they are moved into the correct location on the new server and are accessed properly by the workstations. Changes to the current mapped drive letter and/or server name will also require configuration file changes at the workstation pc's.

To ensure that your Min-U-Script Pro database has been transferred properly, please contact support@minuscript.com for assistance.